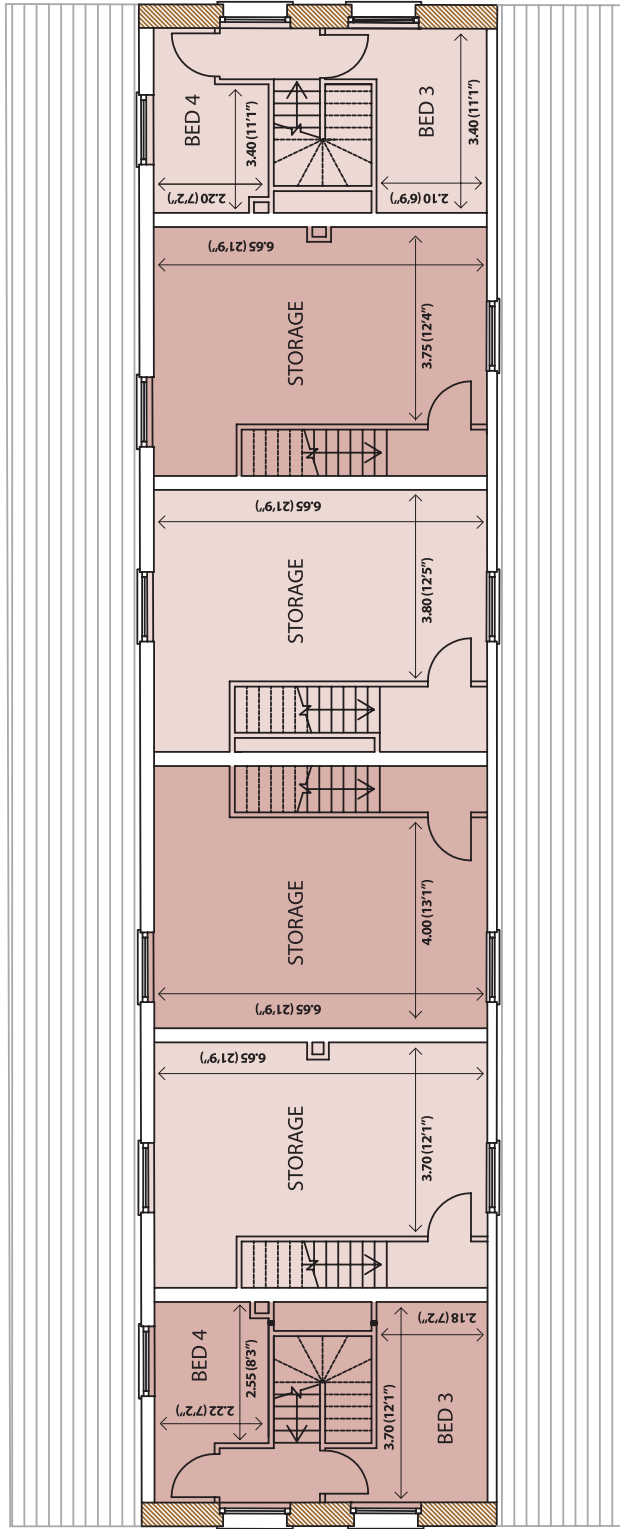


www.tonedalemill.co.uk

Second Floor



C6

C5

C4

C3

C2

C1

For more information please contact:

The Marketing Suite, Tonedale Mill, Wellington, Somerset, TA21 0AW . tel: 01823 470470

www.tonedalemill.co.uk

Printed on 100% recycled paper

Important Notice

Hymore Ltd and their selling agents give notice that:

1. In accordance with the Property Misdescriptions Act 1991, the information contained in this document is provided for general guidance only and does not constitute the whole or any part of an offer or contract.
2. All statements contained in this document as to the properties are made without responsibility on the part of Hymore Ltd.
3. None of the statements contained in this document as to the properties is to be relied on as a statement or representations of fact.
4. Any intending purchasers must satisfy themselves by inspection or otherwise as to the correctness of each of the statements contained in this document.
5. Neither Hymore Ltd nor any person in their employment has any authority to make or give any representation or warranty whatever in relation to the properties.
6. All information, to include floor plans, dimensions and computer representations contained in this document are taken from design intent material and may be subject to further design development. The dimensions are approximate and given for guidance purposes only, they should not be relied upon for carpet sizes, appliance sizes or items of furniture. Purchasers must satisfy themselves by inspection or otherwise. Tonedale Mill is a marketing name only and is not the confirmed postal address. All details are correct at time of going press, March 2008.

Ref: SR070308V1



Tonedale Mill Phase 1 - Stonemasons Row  
Three Storey - 4 Bedroom Houses



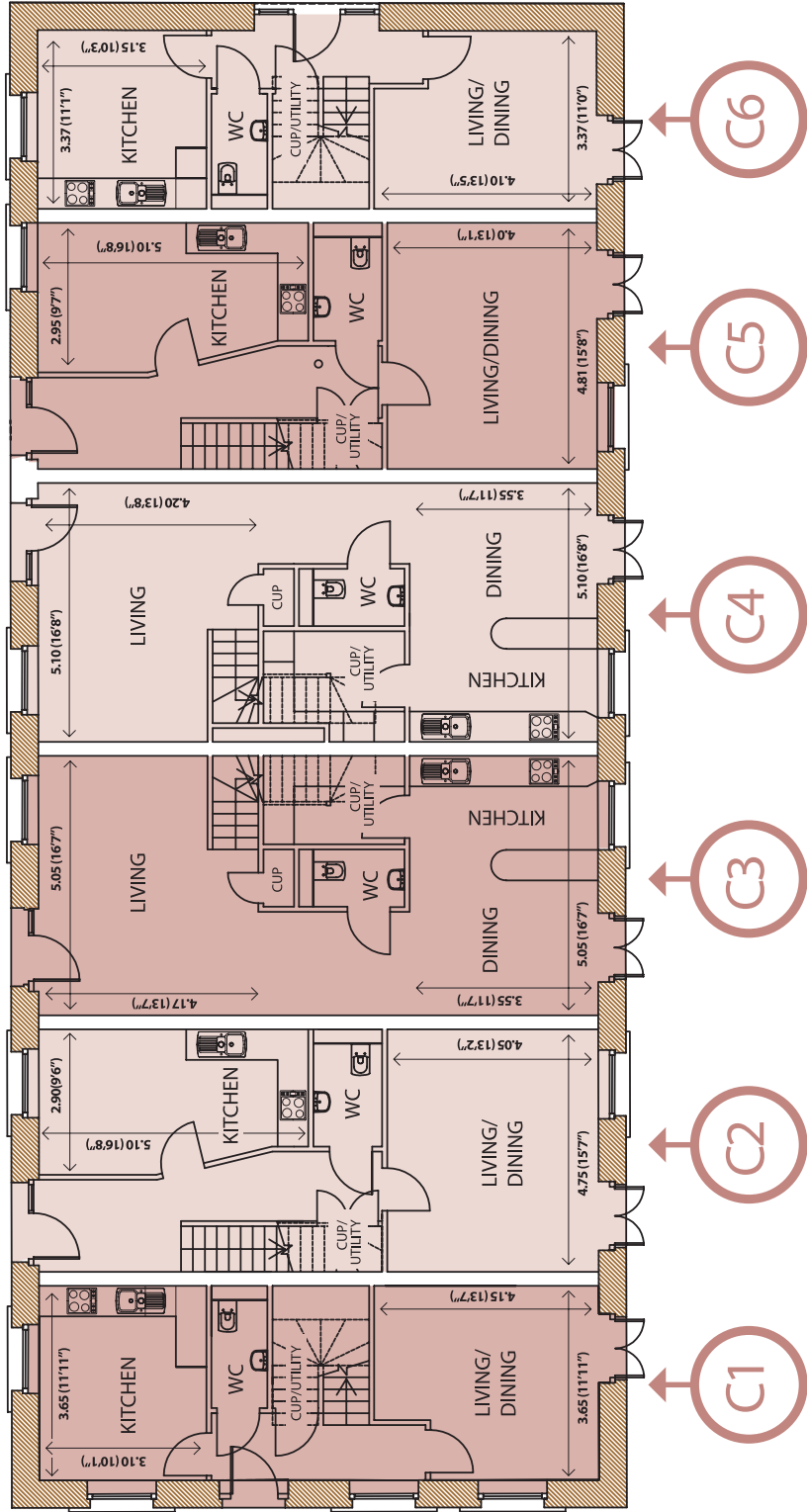
T O N E D A L E  
M I L L

Live Differently

www.tonedalemill.co.uk



Ground Floor



www.tonedalemill.co.uk

www.tonedalemill.co.uk



First Floor

www.tonedalemill.co.uk

